

Wool Flock vs. Synthetic Flock (Informal Report)

The following scans are of the same dressage saddle. Figure 1 shows the saddle stuffed with synthetic flocking. Figure 2 shows the same saddle that has been completely reflocked using Jacobs wool. Both scans were taken with the horse standing square at the halt.

The saddle belongs to a Grand prix dressage rider and the horse it is used on is a large 16.3 hand Hanoverian mare who is trained to Grand Prix. Both scans were taken with this same horse/rider pair. The wool flock produces a better pressure distribution than does the synthetic flock. The maximum peak average pressure with the synthetic flock is 18.0 kPa or 2.61 psi. The maximum peak average pressure with the wool flock is 13.25 kPa or 1.92 psi. The wool flocking produced a maximum average peak pressure that was 26% lower than that produced by the synthetic.

Also, the rider reports that the horse is more responsive to the aids in the wool flocked version. Lastly, the wool has improved his ability to feel the horse's back move during riding.

Note: The saddle was reflocked by a UK SMS qualified saddle fitter.

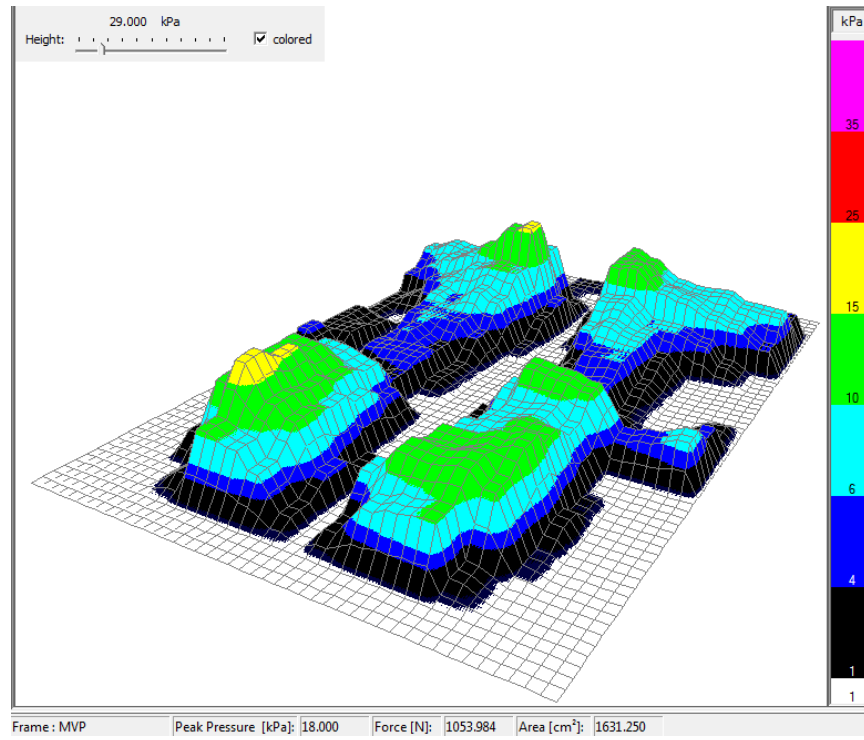


Figure 1: Standing square, average pressure, saddle with synthetic flock.

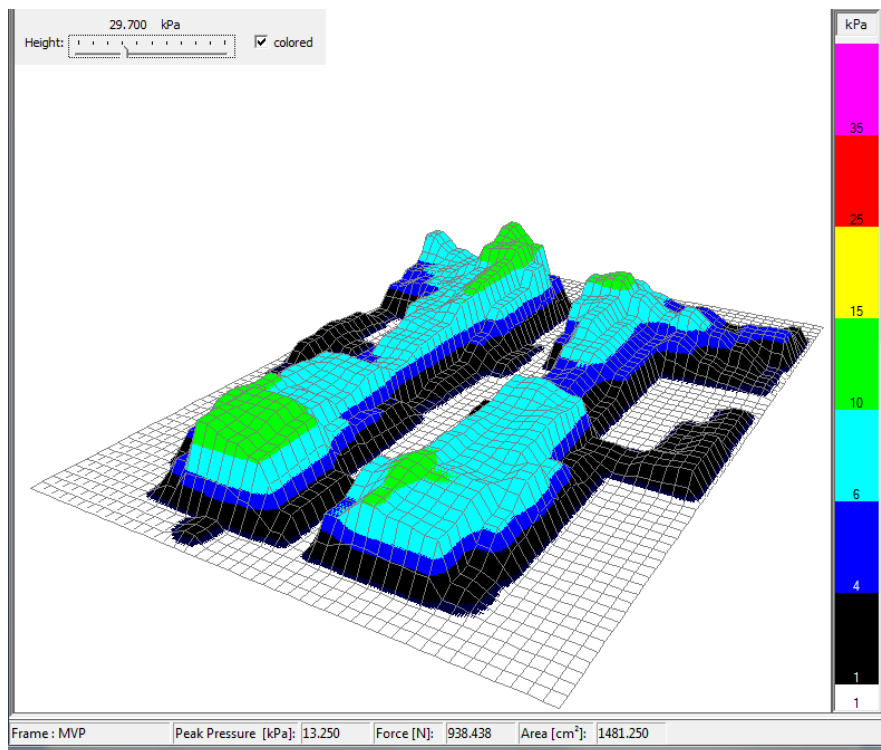


Figure 2: Standing Square, average pressure, saddle reflocked with Jacobs Wool.